

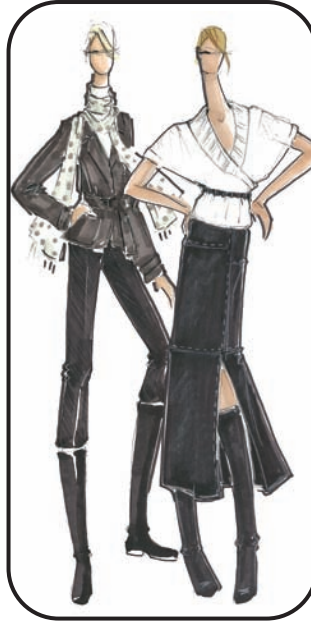
Bubblicious

Bauhaus meets wit and charm... these clothes are shape-driven and architectural with crisp, clean lines. This marks a return to minimalism that is fresh, functional, and aesthetic. Classic fabrications are merged with razor-sharp technology. Crisp neutrals are penetrated by luminescent color. Black and Twilight Gray are contrasted by Winter White, then punched by Confetti, a deep pink, and Bluestar, a gentle blue. Functional days evolve seamlessly into memorable evenings. Bubblicious is a delicious compilation of stylish and urbane chic.



▲ The shape-driven Confetti Pullover swings over a slim pant. Another shape to covet... the Twilight Gray Antoinette Pullover.

▼ Twilight Gray Tropical is fashioned into a modern Trench, then enhanced by the Pale Twilight Dot Scarf. Sleeves and collars are center stage for Fall... here, the Shawl Collar Kimono Pullover.



▲ Make an entrance... A Black Satin Strapless is double belted, then enhanced by the Black Chiffon Flutter Cape. The volume-sleeved Black Shrug tops the Jacquard Tulle Bustier for maximum impact.

▼ A perfect dress solution... The Pale Llama Reverse Jersey Dress. Sure chic... the jacket is Cheetah print on Llama Cord paired with a velvet pant.



▲ Velvet in Gecko Green is fashioned into a jacket with interesting shape and sleeves. Bibbed Stripe Shirt looks smart with a plaid volume trouser.

▼ Here's the long and short of it... Deep Llama Ponté Jacket with the Puppy Tooth Midi. The short skirt is Painted Plaid Suede and topped by the Elongated Pullover.



Camouflage

Estate chic meets urban warrior... a union of casual references with sophisticated interpretation. This mood generates the contemporary classics in Camouflage. Regiment is a theme that provides pieces with strong tailoring yet interesting twists. Fatigue Green, Llama and Dark Llama browns are the base colors. These relaxed neutrals are jolted by Flare and Gecko. Plaids provide appeal while patterns charm. Cozy knits seem to signal Fall while lush fabrications merge luxury with comfort. Camouflage empowers the modern woman with substance and style.



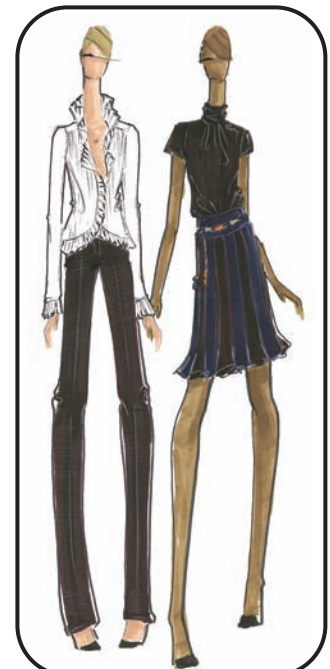
Exotica

This is uber American sensibility fused with inventive European shapes. Glamour reminiscent of Hollywood's Golden Age is balanced by fresh simplicity. Shapes reflect a feminine heritage yet allow contemporary versatility. There is textural interest in bouclés, jacquards, and chunky knits. The dense base colors of Midnight and Bittersweet provide firm foundation for the potent accents of Split Pea, Blue Iris, and Rubescent. Exotica fuses elegance with ease for the modern wardrobe.



▲ Important sleeves are highlighted in the Bittersweet Pouf Sleeve Cardigan. The cool, Waisted Poncho tops the Blue Iris Turtleneck and slim denim.

▼ Texture is another Trend... the Boucle Skirt is paired with the Rubescent Topper Cardigan. The Bayadère Stripe Jacquard Jacket is so chic over the Fall's essential Shirred Waist Shirt.



▲ Another Fall essential... the White Washed Ruffle Shirt. A Crepe Pleated Skirt flirts with the Crepe Tie Tee.



Presenting



WorthWear
Fall 2007



SAMPLE

