

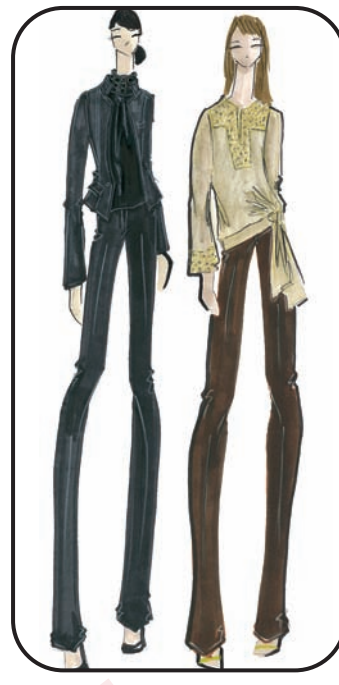
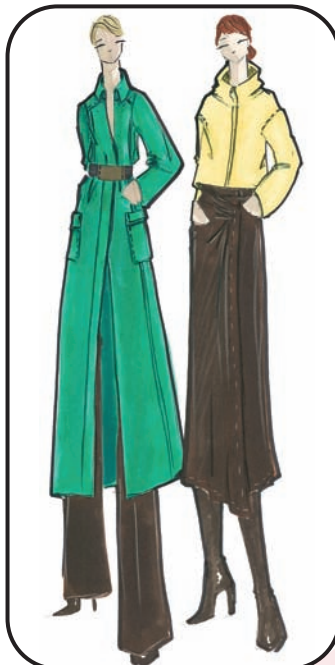
# Nirvana

The mood is heaven meets earth... the heavenly comfort of luxurious fabrics designed into down-to-earth, realistic styles. Modernism is defined by streamlined shapes. The neutral shades of Chestnut Brown and Moonstone Grey are jolted by Greenglow and Solarium. Try warm Chestnut with Greenglow for an unforgettable combination... color mixes create magic... the possibilities are endless to create personal style. The happiness of Solarium is like basking in sunlight. Metallics reflect the moon and the stars. Celestial promise provides wardrobing options for blissful days and divine evenings.



▲ *The Metallic Tweed Wrap Coat provides warmth and sparkle. Shine in the Copper Taffeta Puffer Coat*

▼ *The Greenglow Plush Duffle over a column of Chestnut. Solarium evokes sunshine in the Suede Warm Up Jacket.*



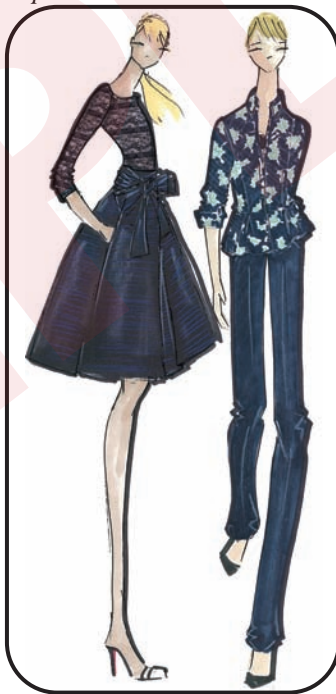
▲ *The Black Velvet Jacket is executed in a modern shape. Glow in the Gold Crinkle Chiffon Embroidered Tunic.*

▼ *The Ombré Basketweave Jacket is classic yet cool. Another twisted classic... tartan in a modern cargo style pant.*



▲ *Kill the chill in the Tweed Wrapper. For a banker's holiday or every day, the Pinstripe Banker Shacket.*

▼ *After five, dress in the Midnight Lace Tee and Dance Skirt. Charming for day or evening, the Pucker Floral Peplum Jacket.*



# Winter Solace

Über classicism meets imaginative application. Winter Solace embodies classic colors and fabrics with alternative shapes and treatments. There are reverse seams and pleats, built-in sleeves, and sweaters finished inside out. The look is understandable yet quirky. The attitude is creative, casual chic. These extraordinary pieces adapt to multiple events and every mood... versatility that can take you to your every destination. Winter Solace will refresh your wardrobe with ingenuity and timeless charm.

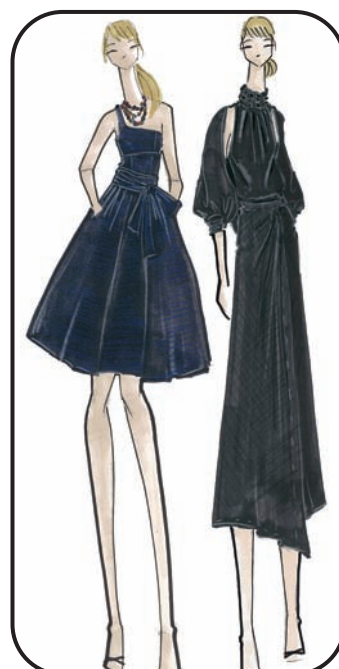
# Sixth Sense

Here are clothes for the uptown girl... the feeling is sophisticated, edgy, school-girl all grown up. The air is of affluence. There are rich, saturated colors. Plaids are traditional yet reflect the insouciant ease of current trends. Architectural jackets and tucked suedes evoke couture. Textural knits lend timeless luxe. Sixth Sense offers ample options for daily dressing as well as upscale occasions.



▲ *We're mad for the Puckered Plaid Mod Bomber. Knits take center stage... the Pointelle Tee and Tank paired with Wavy Rib Skirt.*

▼ *The Shetland Chevron Jacket will pop over everything. The Poplin Jacket looks polished with the waisted Stripe Shirt.*



▲ *Evening looks with tops to die for... One-Shoulder chic. Charmeuse embellished with crystal.*



*WorthWear*  
*Winter 2007*

SAMPLE

