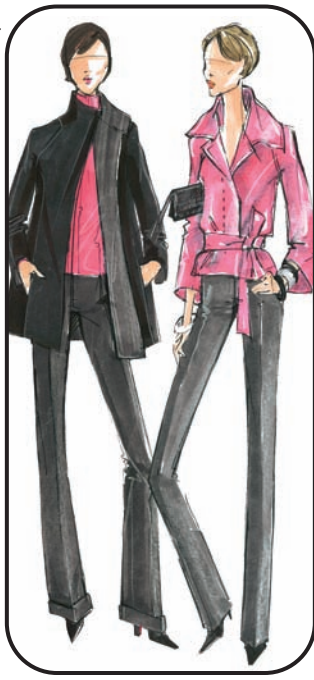


# Bubblicious

Bauhaus meets wit and charm... these clothes are shape-driven and architectural with crisp, clean lines. This marks a return to minimalism that is fresh, functional, and aesthetic. Classic fabrications are merged with razor-sharp technology. Crisp neutrals are penetrated by luminescent color. Black and Twilight Gray are contrasted by Winter White, then punched by Confetti, a deep pink, and Bluestar, a gentle blue. Functional days evolve seamlessly into memorable evenings. Bubblicious is a delicious compilation of stylish and urbane chic.



▲ Reversible Black to Twilight Swing Jacket is the perfect topper. Luscious Confetti leather is glazed, belted, and shaped with style.

▼ The Black and White Walking Cardigan is textural and luxe. Tropical Twilight Gray is shirred for streamlined chic.



▲ Elegant Bluestar silk taffeta is bowed and flared for flattery. Dazzle for evening in the Tulle Bustier with Black Velvet.

▼ Beyond basic is the Flare Bomber Jacket over Fall's updated White Shirt. The Llama Plaid Fringe Shawl is worn as a skirt.



▲ Gold Dust Balloon Skirt enhances the elegant re-embroidered Lurex Jacket. Sophisticated glamour in the subtly metallic Jacquard Rose Jacket with Silk Trapunto Skirt.

▼ Swing shapes the Gecko Green Cashmere Poncho over the charming Fringed Plaid Skirt. Fall is personified in the Cashmere Jacquard Cardigan.



# Camouflage

Estate chic meets urban warrior... a union of casual references with sophisticated interpretation. This mood generates the contemporary classics in Camouflage. Regiment is a theme that provides pieces with strong tailoring yet interesting twists. Fatigue Green, Llama and Dark Llama browns are the base colors. These relaxed neutrals are jolted by Flare and Gecko. Plaids provide appeal and logo prints charm. Cozy knits seem to signal Fall while lush fabrications merge luxury with comfort. Camouflage empowers the modern woman with substance and style.

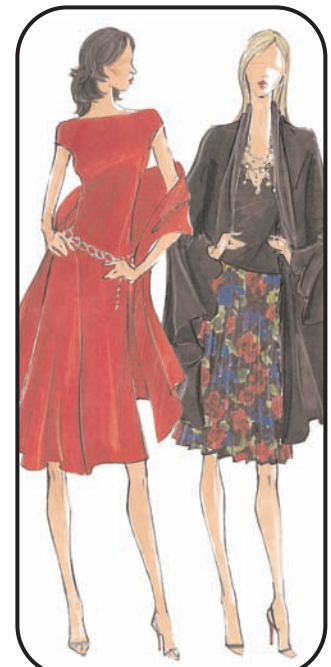
# Exotica

This is uber American sensibility fused with inventive European silhouettes. Glamour reminiscent of Hollywood's Golden Age is balanced by clean simplicity. Shapes reflect a feminine heritage yet allow contemporary versatility. There is textural interest galore... chunky tweeds, corduroy, felted wool, and printed stretch georgette. The dense base colors of Midnight and Bittersweet provide firm foundation for the potent accents of Split Pea, Blue Iris, and Rubescent. Exotica fuses elegance with ease for the fashionable wardrobe.



▲ Split Pea Cashmere pops the Midnight Tweed Jacket paired with Puppy Tooth. Split Pea in high style leather over a column of Midnight Cashmere and Gab.

▼ Stunning Blue Iris shimmers in Shirred Jersey with the Silk Taffeta Evening Skirt. Blue Iris is interpreted in a statement silhouette of the Felt Jacket.



▲ Dresses still appeal... glowing Rubescent in perfectly shaped Ponté. Chiffon is painted and pleated, paired with cashmere, and topped with Circular Shawl.



*Presenting the Fall 2007 Worth Collection*

SAMPLE

